

Mail to:

## House of Faith Happenings



### CalTech Volunteers Help Assemble Teaching Supplies

CalTech Volunteers took on the amazing project of assembling our Opening Visual teaching supplies for our Backyard Bible Clubs. We write all of our curriculum “in-house” at House of Faith and each lesson requires a very creative and extensive Opening Visual. We are so grateful for the many volunteer hours our friends at CalTech put in. They did an excellent job of making over 70 Opening Visuals for our Backyard Bible Club teaching tools. Thank you CalTech!

### San Angelo Cowboy Gathering

House of Faith was fortunate to be the beneficiary for the 2018 San Angelo Cowboy Gathering. SACG Director Terri Holland presented the House of Faith staff with a check for \$10,100.



House of Faith is grateful to the 130 volunteers that helped make the SACG a successful event. These volunteers came from Goodfellow AFB, MHMR staff, Sunday school class friends at Glen Meadows Baptist Church, Central High School NHS and Key Club students, and House of Faith volunteers. The following businesses donated to the raffle and LIVE auction: Cowboy Up Chocolates, Long Horn Coffee, Eggemeyer's General Store, Exotic Expressions, Roger Allen/Chicken Farm Art Center, Texas Bank and Sookie Sookie.



House of Faith Staff & Volunteers with Terri Holland



### 321 Youth Skate Party

Our “321” Middle School and High School program started back up on September 17th with 115 students in attendance. Our building was under a paint job renovation; therefore, a plan was set to have the first 321 at the Angelo Fun and Skate Center. Our youth had a fantastic evening skating, golfing, and playing games. At the end of the night a Bible lesson was taught by Reid Needham, a faithful volunteer.



# HOUSE OF FAITH NEIGHBORHOOD NEWS

SEPTEMBER 2018

"Taking JESUS to neighborhood children, youth & families since 1994"



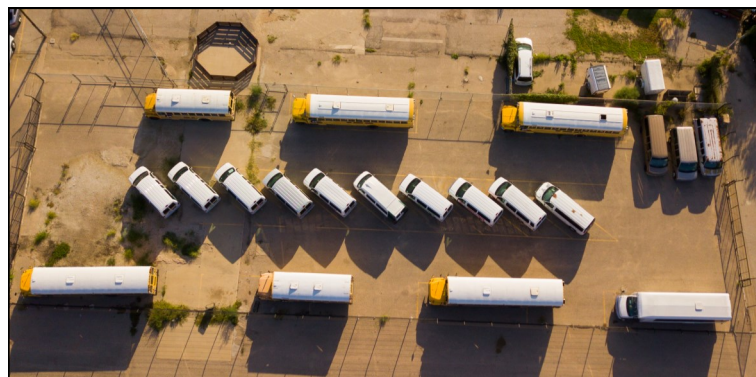
## When Stewardship Hurts

By Kevin Reynolds, Co-Founder/Executive Director

**Stewardship** n.- *stew·ard·ship/'stü-ərd-,ship*  
2: the supervising, or managing of something *especially*: the careful and responsible management of something entrusted to one's care.

*"Suppose you have not been worthy of trust in handling worldly wealth. Then who will trust you with true riches?" Luke 16:11 NIV*

How could a weekly ministry that provides transportation to over **600 children and youth start a school year without vehicle insurance?** We actually did that just two weeks ago with the amazing help of our community! Many amazing churches provided vans and a bus to help us make a strong start for the 2018-2019 school year. Thank you Freedom Fellowship, Christian Church of San Angelo, San Angelo First Assembly, Lake View Bible Church and The Heights!



Aerial photo of the House of Faith Fleet of Vehicles.

It is simply amazing that of our 2200 registered children and youth, we **provide transportation to over 600 students** who might otherwise not get to come to House of Faith programs. This takes place on a **fleet of 21 vehicles made up of 14 vans, 6 buses and 1 pickup truck by way of 47 different routes**, at a cost of \$15,000/year for vehicle insurance. To say the least, this is no small undertaking, and we are so grateful for the ways the Lord has provided through these last 25 years and for the many volunteer drivers that help make this weekly feat possible.

When we communicate how much we appreciate and value your partnership financially, those are not simply words. Ours is a **solemn and sacred relationship that we treasure, and we know we are just stewards of the**

**finances** that flow from The Lord through you and on to House of Faith. Space does not permit me to describe the kind of angst we felt when we found out in July that our **vehicle insurance premium would increase from \$20,000 to \$35,000/year.**

Several years ago, the Lord led me to place Jimmy Hill in a greater administrative role in regards to our financial expenses making him, in effect, the "gatekeeper" of ministry expenses. The wisdom of giving Jimmy oversight of such a key aspect of our operations has never been more evident than when **"shopping around for the best vehicle insurance"** became critical with this significant increase in our insurance premium. Jimmy kept me updated while we "grounded" our entire fleet for what ended up being a 6 week nationwide search for less expensive coverage. On more than one occasion, I saw him among our grounded fleet praying and asking The Lord for help.

**Stewardship did hurt** a bit our first week back as we began all our programs for the school year without having being able to resolve the insurance issue, but we stood in awe of the Lord's provision once again. The week began with a new provider who guaranteed a great rate but there were problems crossing all the T's and dotting all the I's. We went through our first 321 Youth event involving 120 youth on 11 different routes with vehicles from our partner churches. The situation had not changed as of Wednesday for our first BBC clubs, and we had to do the same thing again. Finally, at 1:44 PM on Thursday, just over an hour before the school bells ring and 7 locations of our BBC clubs begin, the new policy was in place - **not the last minute, but pretty darn close!**

**The new policy? Only \$10,175/year.** That's right. Not only did we **NOT have to pay** over double the old rate, we actually got a great policy at a rate considerably lower!! Praise the Lord!

Thank you Jimmy for sweating this one out to a great outcome.

Thank you friends and partners who trust us as stewards of your gifts to The Lord.

Thank you Heavenly Father for trusting us as stewards of the **true riches** of "Taking JESUS to neighborhood Children, Youth & Families."

May the Lord bless and keep you in him!

*Kevin*